

Aircraft Noise Report

2021 Annual Summary

Cincinnati/Northern Kentucky
International Airport



AIRCRAFT NOISE REPORT 2021 ANNUAL SUMMARY

Table of Contents and Summary of Reports

<u>Aircraft Noise Report</u> This report details the locations of all complaints for the reporting period. Comparisons include state, county and areas within each county.	Page 1
<u>Total Complaints & Operations Comparison</u> This report compares the total complaints for the reporting period to the previous years. It also compares the total annual complaints with the total number of annual operations for each year.	Page 2
<u>Complaints by Time of Day</u> This report compares the complaint occurrence during daytime operations (7am - 10pm) and nighttime operations (10pm-7am).	Page 3
<u>Complaints by Category</u> Complaints received for the reporting period are detailed by descriptors for noise levels, perceived aircraft level, and more.	Page 4
<u>Frequent Complainants</u> This report shows the number of complaints made by the most frequent/repeat complainants for the reporting period.	Page 5
<u>Sisters of Charity Quarterly Monitoring</u> This report details the noise monitoring location and results for each reporting period.	Page 6

2021 ANNUAL SUMMARY AIRCRAFT NOISE REPORT

Kentucky Calls

Boone County	460
Burlington	17
Florence	175
Francisville	1
Hebron	31
Petersburg	1
Union	227
Verona	5
Walton	3
Campbell County	8
Highland Heights	2
Wilder	6

Pendleton County	1
Pendleton	1

Kentucky Calls Continued

Kenton County	183
Covington	24
Crescent Springs	11
Crestview Hills	1
Crittenden	2
Edgewood	5
Erlanger	5
Fort Mitchell	122
Fort Wright	1
Independence	5
Taylor Mill	1
Villa Hills	6

Indiana Calls

Dearborn County	9
Aurora	4
Batesville	3
Lawrenceburg	2

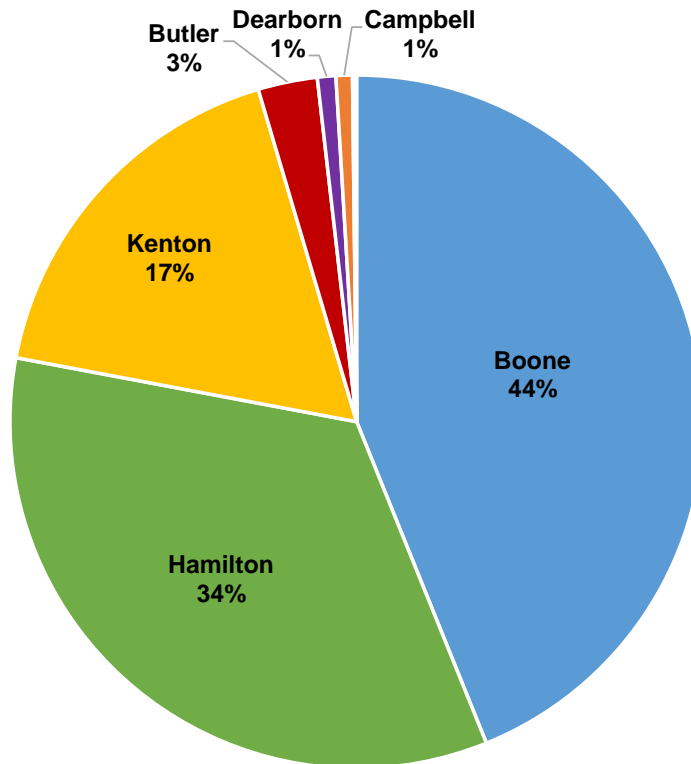
Ohio Calls

Butler County	29
Okeana	29

Clermont County	1
Amelia	1

Hamilton County	357
Bridgetown North	2
Cincinnati	318
Cleves	12
Delhi Township	9
Dent	1
Loveland	1
Mack	4
North Bend	7
Sayler Park	2
Western Hills	1

No location provided	21
-----------------------------	-----------



2021 ANNUAL SUMMARY TOTAL COMPLAINTS & OPERATIONS

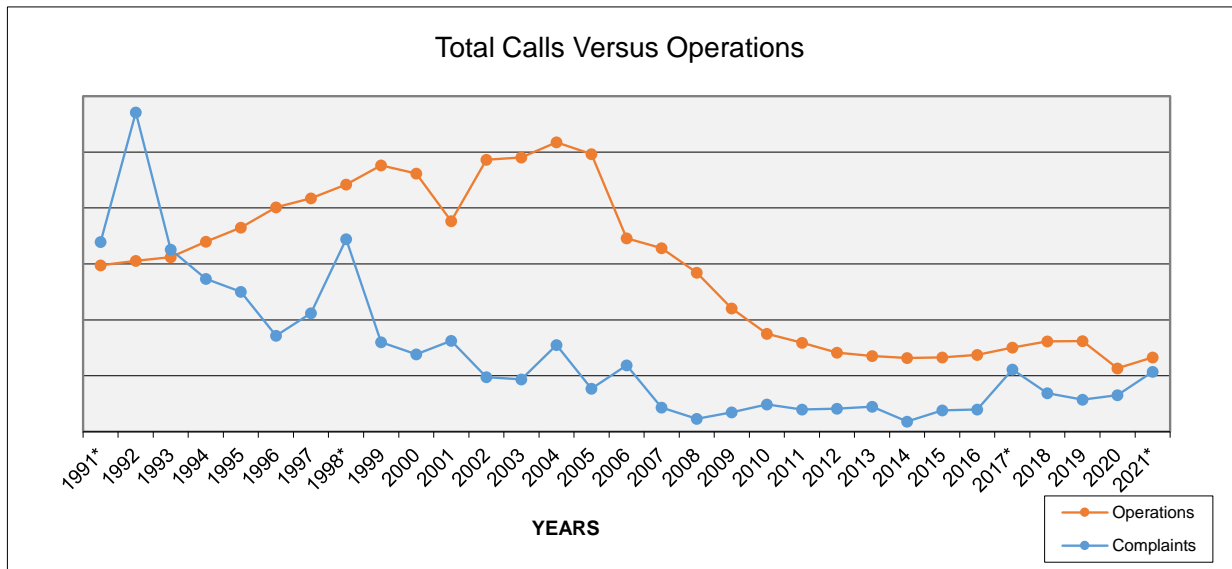
YEAR	COMPLAINTS	OPERATIONS
1991*	3,393	297,425
1992	5,709	305,544
1993	3,256	312,204
1994	2,734	339,839
1995	2,500	365,114
1996	1,717	401,367
1997	2,118	417,391
1998*	3,444	442,276
1999	1,601	476,128
2000	1,384	461,454
2001	1,626	376,744
2002	978	486,501
2003	933	490,284
2004	1,550	517,520
2005	767	496,366
2006	1,187	345,754
2007	432	328,069
2008	232	284,487
2009	344	220,323
2010	486	174,982
2011	398	159,060
2012	414	141,372
2013	449	135,492
2014	182	131,695
2015	379	133,068
2016	395	137,225
2017*	1,111	150,463
2018	691	161,672
2019	571	162,106
2020	651	113,377
2021*	1,069	132,867
TOTAL	42,701	9,098,169

* Total complaints included September - December, 1991

* 1,845 complaints were made by one complainant

* 546 complaints were made by one complainant

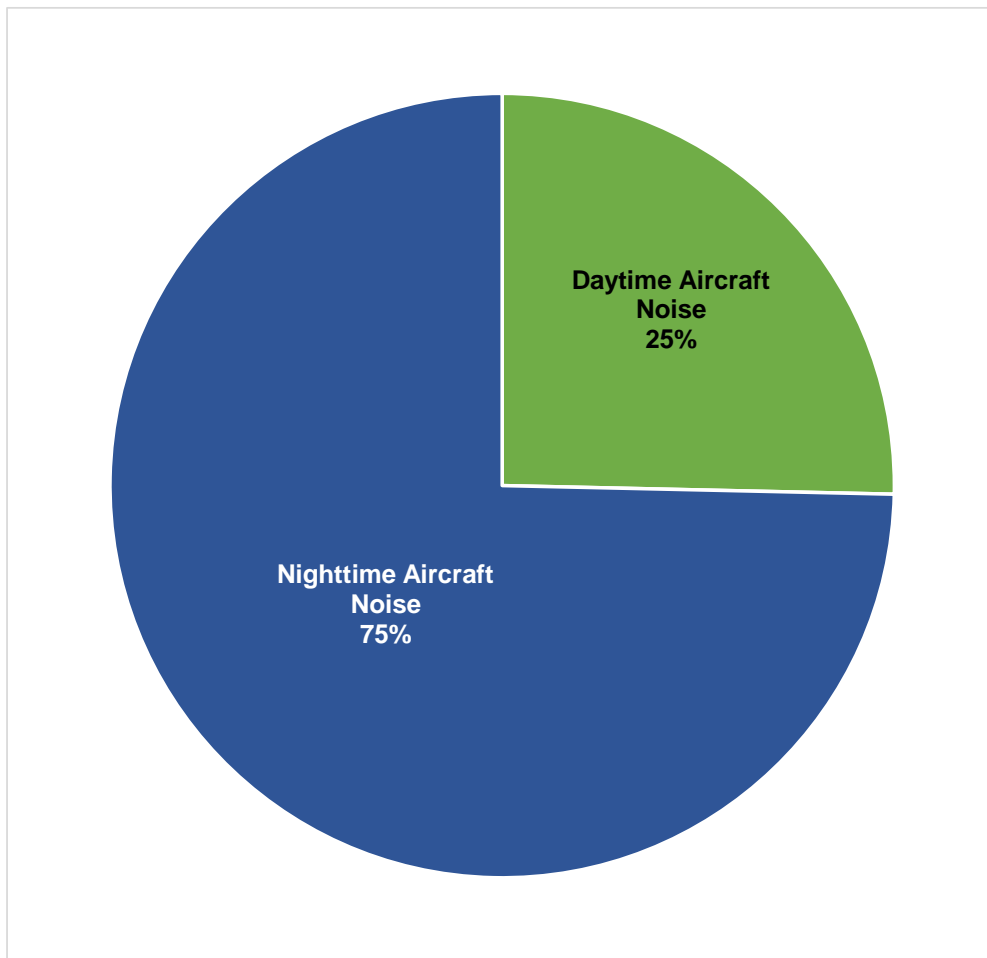
* Increase related to RWY 9/27 closure



Note: Graph shown is not using the same numeric scale for Total Calls and Total Operations but is designed to show correlation between Total Calls and Total Operations.

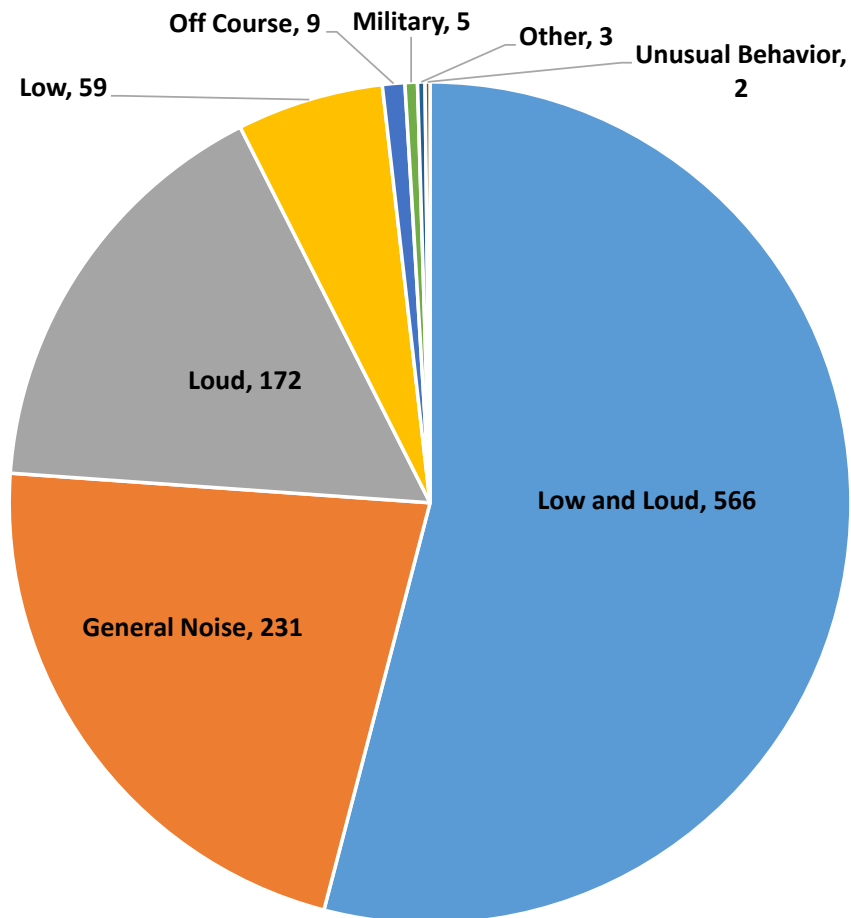
2021 ANNUAL SUMMARY COMPLAINTS BY TIME OF DAY

Category Description	Number of Complaints and/or Questions	Percentage Comparison
Daytime Aircraft Noise (7am - 10pm)	271	25.35%
Nighttime Aircraft Noise (10pm - 7am)	798	74.65%
TOTAL	1069	100.00%



2021 ANNUAL SUMMARY COMPLAINTS BY CATEGORY

Category Description	Number of Complaints and/or Questions	Percentage Comparison
Low and Loud	566	52.95%
General Noise	250	23.39%
Loud	172	16.09%
Low	59	5.52%
Off Course	9	0.84%
Military	5	0.47%
Other	3	0.28%
Unusual Behavior	2	0.19%
Landing Gear Down	1	0.09%
Helicopter	1	0.09%
Safety Concerns	1	0.09%
TOTAL	1069	100.00%



2021 ANNUAL SUMMARY FREQUENT COMPLAINANTS

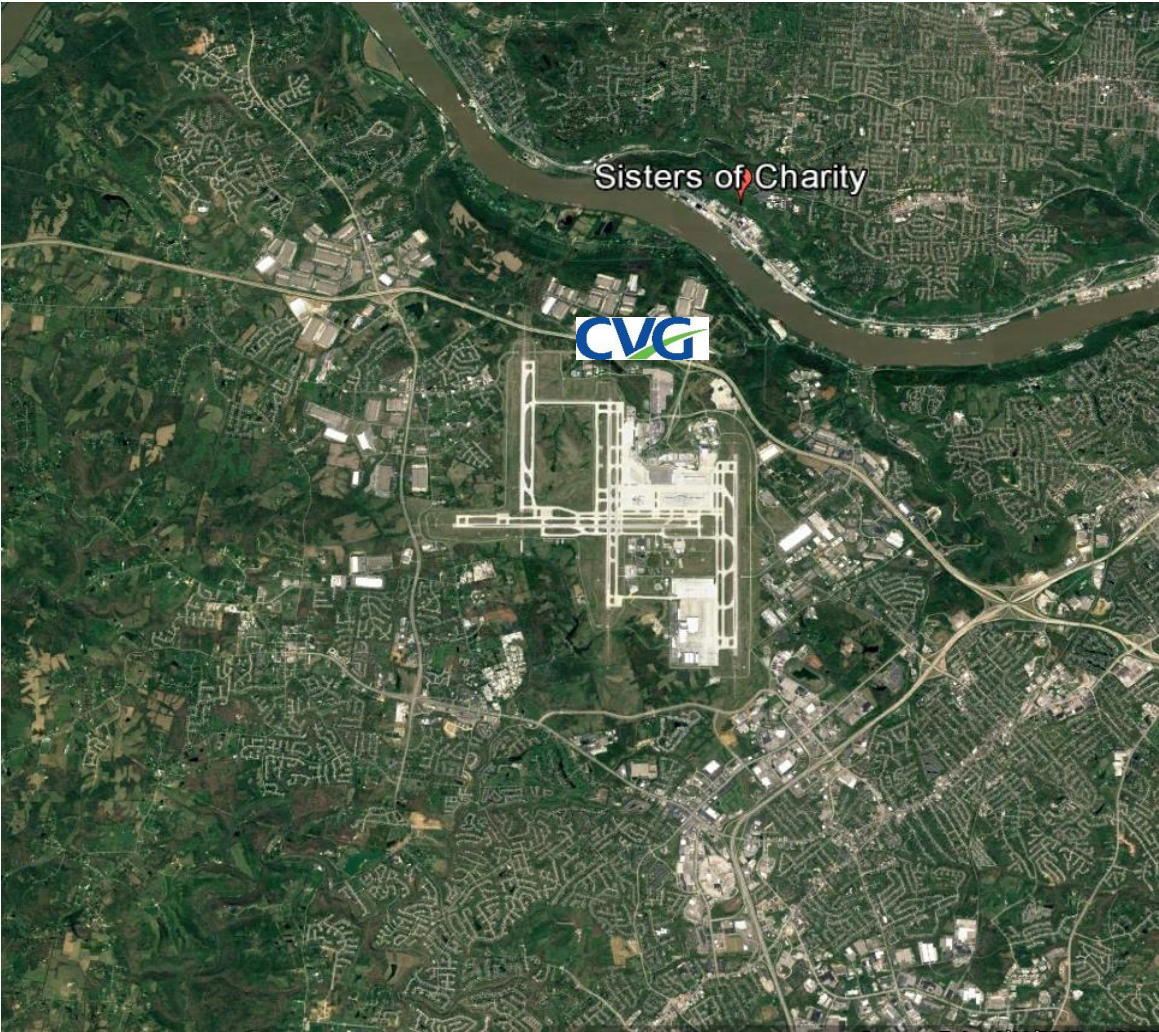
Caller	State	City or Area	Runway	Number of Complaints	Percent of Total Complaints
1	KY	Union	36R/18L	175	16%
2	KY	Fort Mitchell	9/27	120	11%
3	OH	Cincinnati	36R/18L	31	3%
4	KY	Florence	36R/18L	31	3%
5	OH	Okeana	36R/18L & 36C/18C	28	3%
6	KY	Covington	9/27	20	2%
7	OH	Cincinnati	36R/18L	12	1%
8	OH	Cincinnati	36R/18L	12	1%
9	KY	Florence	36R/18L	10	1%
10	OH	Cincinnati	36R/18L	9	1%
11	OH	Cincinnati	36R/18L	9	1%
			TOTALS	457	43%

Totals	
Total 2021 Complaints	1069
Total 2021 Complainants	396

2021 ANNUAL SUMMARY
SISTERS OF CHARITY QUARTERLY MONITORING

Monitoring Period	DNL
Quarter 1	57.6
Quarter 2	67.3*
Quarter 3	65.3*
Quarter 4	56.2

**Runway 9/27, which is the primary nighttime runway at CVG, was closed for a major rehabilitation project during the second and third quarter monitoring sessions. As a result, a greater number of arrivals occurred on Runway 18L and a greater number of departures occurred on Runway 36R compared to other monitoring periods.*



Source: Google Maps